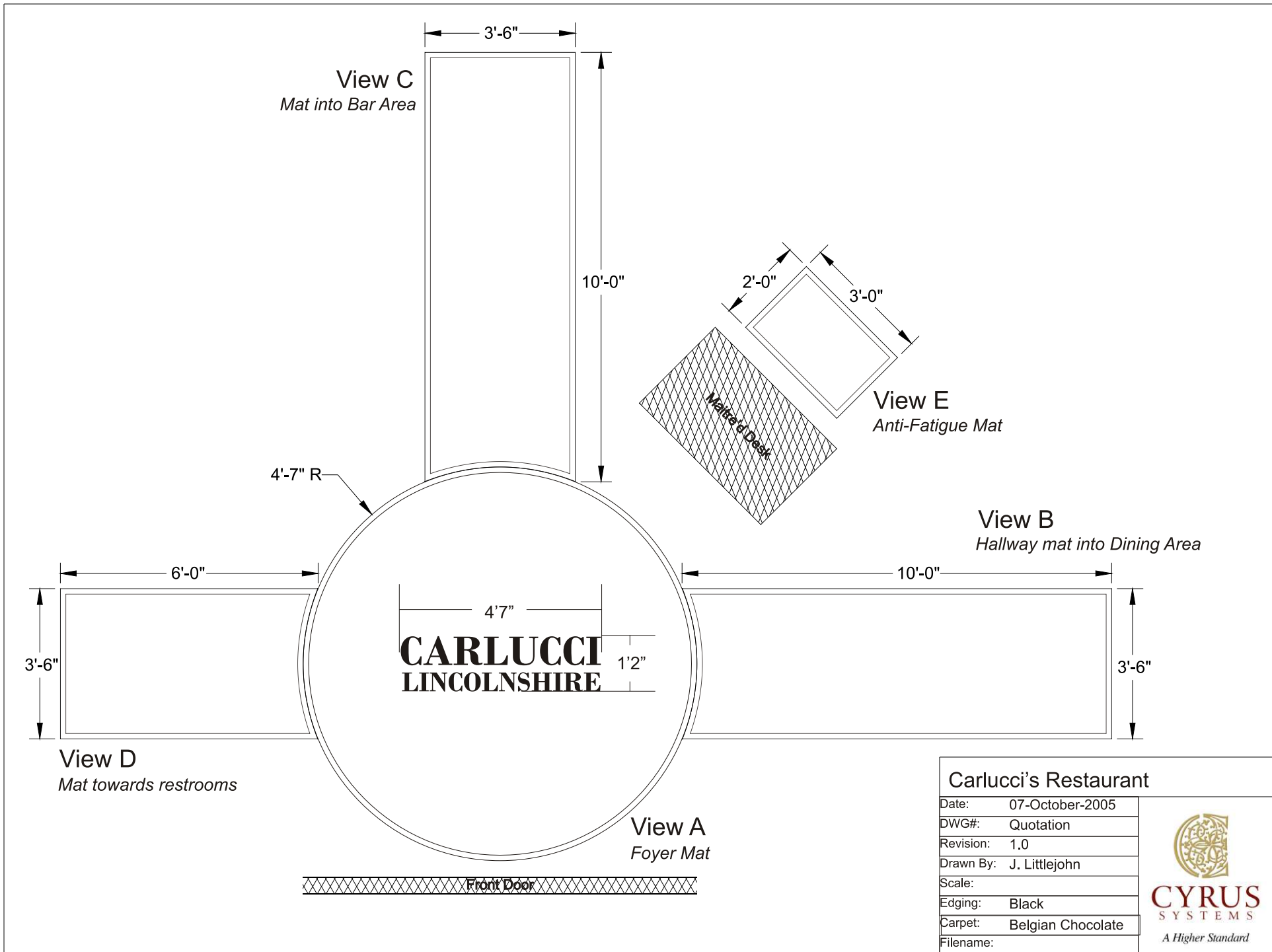


Carlucci's Restaurant	
Date:	07-October-2005
DWG#:	Quotation
Revision:	1.0
Drawn By:	J. Littlejohn
Scale:	
Edging:	Black
Carpet:	Belgian Chocolate
Filename:	





View C
Mat into Bar Area

3'-6"
10'-0"

View E
Anti-Fatigue Mat

2'-0"
3'-0"

View B
Hallway mat into Dining Area

10'-0"
3'-6"

4'-7" R

4'7"
CARLUCCI
LINCOLNSHIRE


1'2"

View D
Mat towards restrooms

6'-0"
3'-6"

View A
Foyer Mat

Front Door

Carlucci's Restaurant		 CYRUS SYSTEMS <i>A Higher Standard</i>
Date:	07-October-2005	
DWG#:	Quotation	
Revision:	1.0	
Drawn By:	J. Littlejohn	
Scale:		
Edging:	Black	
Carpet:	Belgian Chocolate	
Filename:		